



# Bishop's Itchington Annual Village Meeting 2026

# Bishop's Itchington Annual Village Meeting

## 27<sup>th</sup> April 2026 - Agenda

---

Page:

1. Welcome.....	2
2. Apologies for Absence.....	2
3. Minutes of the Annual Village Meeting 28 April 2025 at 7:30pm.....	2
4. Matters Arising from the Minutes.....	10
5. Report from the Chairman of Bishop's Itchington Parish Council.....	10
6. Reports from Portfolio Holders of Bishop's Itchington Parish Council.....	11
6.1 Biodiversity – Cllr Matthew Burns.....	11
6.2 Community Centre – Cllr Norman Thomas.....	11
6.3 Playground/Playing Field – Cllr Norman Thomas.....	12
6.4 Churchyard, Cemetery & Allotments – Cllr Alistair Lamont.....	13
6.5 Finance – Cllr Christopher Kettle.....	14
6.6 Planning – Cllr Adam Dugmore.....	14
6.7 HR – Cllr Orlaith Horsman.....	15
6.8 Police liaison – Cllr Orlaith Horsman.....	16
6.9 Bishop's Itchington Primary School Liaison – Cllr Orlaith Horsman.....	18
7. Reports from Village Organisations.....	19
7.1 Crafty Cuppa.....	19
7.2 Bishop's Itchington Senior Residents Association.....	19
7.3 Bishop's Itchington Football Club (BIFC).....	20
7.4 Bishop's Itchington Sports Association (BISA).....	20
7.5 Friends of Bishop's Itchington Primary School.....	21
7.6 Bishop's Itchington WI.....	22
7.7 St Michael's Church.....	22
7.8 Friends of the Yellow Land & Bishop's Itchington Nature Group (BING).....	24
7.9 Bishop's Itchington Footpath Group.....	25
7.10 Men's Shed.....	25
7.11 Memorial Hall.....	26
7.12 Hidden Green Community Growing Space - Old Road.....	27
8. County & District Councillors' Reports and Questions.....	28
8.1 Councillor Christopher Kettle – Warwickshire County Council.....	28
8.2 District Councillor Natalie Gist.....	31
9. Parish Council Attendance Record May 2025 - April 2026.....	38
10. Question & Answer Session.....	39
11. Close of Meeting.....	39

## 1. Welcome

A welcome from Cllr Christopher Kettle, Chairman of Bishop's Itchington Parish Council

## 2. Apologies for Absence

## 3. Minutes of the Annual Village Meeting 28 April 2025 at 7:30pm

**Present:** Cllr Chris Kettle (Chairman), Cllr Adam Dugmore, Cllr Orlaith Horsman, Cllr Alistair Lamont, Cllr Simon Tagg-Wilkinson, Cllr Jane Thomas, Cllr Norman Thomas, Cllr Steve Tressler

**In attendance:** Karen Stevens (Parish Clerk), 10 Members of the public, Cllr Natalie Gist, Cllr Nigel Rock

Councillor Kettle (Chairman) thanked everyone for attending and those who had provided reports for inclusion in the paperwork for the meeting.

He advised that this is Karen's last official meeting as Clerk to Bishop's Itchington Parish Council as she relocating to Northumberland. We did thank Karen at our last Parish Council meeting, but I would, particularly in front of you as representatives of the village, to record our thanks to Karen for her contribution.

- 1. Apologies:**  
Pam Reason

### 2. Minutes of the Annual Village Meeting 29 April 2024:

It was **RESOLVED** to approve the minutes of the Annual Village meeting held on 29 April 2024 as a true and complete record of that meeting. (Proposed Cllr Tagg-Wilkinson, seconded Bill Landon)

### 3. Bishop's Itchington Parish Council Annual Report for the Year Ended 31 March 2025:

The chairman advised that he is not going to go through each of the reports in detail as they are in the paperwork for those who wish to read them but if there are questions, please feel free to ask them.

Each member of the parish council has taken on an area of responsibility as portfolio holder.

**Biodiversity and Climate Change:** Cllr Simon Tagg-Wilkinson has been the portfolio holder for Biodiversity and Climate Changed but sadly, due to other commitments has decided to resign as a parish councillor.

We do take our biodiversity and climate change responsibilities seriously; obviously our opportunity is limited in a village like this, but it is important that the decisions we do make do consider what the implications are from a biodiversity perspective and where we can influence we will do so. Cllr Kettle

thanked Cllr Tagg-Wilkinson for his expert input as his contribution has been great.

**Cemetery and Churchyard:** as many of you are aware there have been some major challenges at the cemetery over the past 12 months. Lessons have been learnt. As the portfolio holder, Cllr Alistair Lamont has said that we need to move forward, and this is what we are doing. There is limited space in the cemetery and additional land needs to be acquired. We are aware that over the last two winters there has been flooding issues at the cemetery, and we are looking at ways to try to alleviate this.

David Pink commented regarding the Churchyard and the excellent job on laying the hedge – it is hoped that the other half of the hedge (Manor Road) can be laid this winter.

**Play Area/Hardcourts/Playing Field:** Cllr Norman Thomas holds the portfolio role and he was significantly responsible for the refurbishment of the play area. Cllr Kettle thanked Cllr N Thomas for what he has done.

Cllr Thomas advised that the play area although it is now two years old, continues to be well used by those in the village as well as visitors from other villages. There is an issue with graffiti being sprayed on to the equipment and whilst this does not detract from the functionality of it, it does make it look grim. The path has eroded, and we will have to address this issue. Cllr Thomas would like to get a steel youth shelter installed next to the football pitch to try and get the older children/youths out of the play area at night. We are also looking at the relacing the fence between the playground and Ivy Villa.

The hard courts are extremely well used, and they were resurfaced recently.

The senior football team is down to one team at the moment, but they are hoping to set up a second team. Stockton Youth Football Club are asking to use our pitch on a regular basis. Many of the members of the club are from Bishop's Itchington.

The cricket club has been reinstated, and it is being well supported. They are looking at getting a new artificial wicket installed as the old one is very old and not fit for purpose.

A new working group has been set up to look at replacing the current pavilion.

As you are aware, Judith Chrisitan-Carter recently passed away and the parish council has ordered a bench in her memory, and this will be installed next to the other memorial bench by the path that leads down to the hardcourts.

**Human Resources:** The portfolio holder, Cllr Orlaith Horsman advised that everything is in the report published in the paperwork. She thanked the Clerk for everything she has done for the parish council/village. There is currently a recruitment drive taking place to fill the Clerk/RFO vacancy. There are also three vacancies for parish councillors if anyone would like to join the parish council – if interested, please contact the parish office.

**Planning:** Cllr Adam Dugmore is the portfolio holder and Cllr Kettle advised that he very grateful for his diligence – the parish council sees a lot of planning applications some of which are significant issues. Currently Cllr Dugmore and he

are dealing with issues relating to the solar farm at Old Town and he was very grateful for Adam attending a recent meeting with Highways Officers senior officers from Stratford District Council. Cllr Dugmore gave the following verbal report to the meeting:

“Over the past year, we’ve seen a variety of planning applications. All of these are discussed and a response agreed in a full council meeting or, if the timescales do not allow this, the clerk submits a response on the council’s behalf, after consulting with members.

Most are straightforward extensions or changes of use, plus some seeking permission to cut back or remove trees which are subject to tree preservation orders. It’s been a fairly steady year with little reaching too far out of the ordinary, however there were a few applications that sparked interest from residents.

Regarding the regeneration of three Orbit sites around the village, though the Gaydon Road site was approved last March, the other two sites – one in St Michael’s Close and the other on Starbold Road – have been withdrawn. As the three were part of a co-ordinated plan to ensure existing residents had somewhere to move to, we’re not sure what this means for the whole project.

One of the more controversial applications was a battery storage facility on Hambridge Road, which would have industrialised an area which has been identified in our Neighbourhood Development Plan for protection. The planning officer used the NDP policy, among others from the Core Strategy to support her decision to refuse.

There have also been a couple of applications to vary existing planning permissions which have prompted some discussion between planning and highways officers and, while we’re not happy with the information we’re being provided, we’re chasing for answers.

The parish council has a voice in the planning process and one that we are prepared to use. Where we make representation and that representation conflicts with the officer’s recommendation, we get to speak to the committee and reflect the community’s position. This, as we saw very recently, can influence the committee’s decision. In some cases, steering them away from thoughtlessly following policy and instead finding ways to interpret them in a way that delivers common sense.

We can never afford to take our foot off the gas, though. Many of you are aware of the South Warwickshire Local Plan and the quite vague proposals for new settlements in our part of the district. We can take some comfort from the data which does seem to suggest that the sites which would have a direct impact on this area are among the least favourable, but we continue to watch for new news.

Beyond the SWLP, and perhaps prompted by its preparation, we should prepare ourselves for another rash of applications. Among others, we already know that Richborough Estates is looking at another 80 houses on Gaydon Road, next to the Chapple-Hyam Avenue estate, while Barratt David Wilson homes has made an Environmental Impact Screening Request for up to 275 houses (yes, you did hear that right. Two hundred and seventy-five) between Hambridge Road and Ladbroke Road, filling the space from Old Road to the Itchen.

Remember the power to grant or refuse these rests with Stratford District Council but we'll of course be doing what we can with these to ensure that, if developments are to happen here, they remain appropriate to the village, are of high quality and contribute to a sustainable future”.

**Finance:** - Cllr Chris Kettle is the portfolio holder. The budget process starts each year in November /December as we must submit what the parish precept will be by the mid-January deadline. This poses a challenge as we have three/four months left of the financial year before we have to set what the budget is going to be for the next year and we are required to be prudent in that we should not be committing to spend more money than we are getting in unless we have sufficient revenue reserves to cover the shortfall. We forecast carefully what the expenditure is going to be in January, February and March. When we did the budget last year for the period just ended, we did estimate we would break even and despite the additional costs we had for the cemetery, we have spent less than we thought so have about £17,000 to carry forward. That money is not lost but is included in our reserves for the benefit of future expenditure. What we have done over some years is we have some long term projects in the village such as the tennis court that does not require much annual maintenance but does require significant expenditure approximately once every ten years when we have to resurface the courts (approximately £20,000) so rather than take a hit in one year of £20,000 what we build up is a fund each year so that when this happens we have money in the budget so we do not have to call on residents to pay a significant increase in council tax in that year. Therefore, when we have a surplus that is what we do with it to cover major expenses in the future i.e. new playground equipment, extra land for the cemetery etc.

Moving forward, we have set a budget of £112,500 which equates to £93.58 per annum for a band D house compared with £92.55 last year (an increase of 1.1% per household).

**Police Liaison:** Cllrs Orlaith Horsman and Norman Thomas take on the role of liaison between the parish and Southam SMT station. Cllr Horsman advised that everything is in her report. We are all conscious of escalating reports within the community of anti-social behaviour, car theft and home burglaries and therefore she and Cllrs Norman Thomas, Natalie Gist and Nigel Rock met with the local police team on 1 April. Listened to their plans for a presence in the local community in that they will be stationing mobile vehicles for certain periods of time allowing the community to come along and speak to them. They are very conscious of the car thefts. In terms of anti-social behaviour that we described that have been reported they were aware of but less aware of the things we see on Facebook. Incidents need to be reported formally as they do not look at Facebook. The main thing that came from the meeting was a process for the community to report all kinds of issues (see appendix 1 attached) including what to report and what to include in the report. Without this level of reporting, they will not get additional resources needed to tackle the issues that affecting the community. What we want to gain is a better working relationship with the police to help tackle crime in the village.

As a parish council we have talked about should we call a village meeting with the local team, and the feasibility of CCTV points across the community with people using their own footage – how we can get a coordinated response to tackling

what is perceived to be an escalation of crime thereby making people feel safer in the local community.

The message to the community is if you see crime/experience crime, report it to the police. They will not see a report on Facebook.

#### 4. Reports from Village Organisations

Cllr Thomas advised that reports from the various Village Organisations can be found in the paperwork for the meeting. He then went on to highlight some of the main things that have happened in the various organisations:

**Men's Shed:** The sheds bee Apiary has been doing well producing honey.

**BIFC:** This year is the hundredth anniversary of the club.

**Bishop's Itchington Sports Association (BISA):** Been was established about 20 years ago and runs the sports facilities in the village. Various activities take place at the Memorial Hall and playing field. They also established the working group to look at replacing the current pavilion.

**WI:** BIWI have reached their Centenary this year and had a party to celebrate. Moya thanked the parish council and particularly Karen for supporting the WI Garden Group who look after all the all the planters in the village.

**Friends of Bishops Itchington Primary School (FOBIPS):** There have been several changes in the makeup of their committee and Donnamarie Davenport who has been the chair for several years stood down this year with Elizabeth Scott taking over the role. The group continue to organise lots of very successful events to support the school.

**St Michaels Church:** There is a thriving congregation. Heather Boyd advised there are several services, and everyone is welcome to attend. It is very child friendly, and they do have a fantastic congregation. It is a large congregation for a rural church and there is a lot going on. One of the things that does go out through the church which touches people in the village and the surrounding areas is the food bank (see information in the supporting papers). They are the smallest foodbank in the Fosse Foodbank Group, but they are getting increasing demand year on year and have had to increase the amount of food they hold within the foodbank as they are getting so many people requesting help. It is very sad, but they are glad to be there to help people in their time of need and they are expecting the situation to get worse. They do undertake deliveries for people who are not able to collect. They are open on Thursdays between 2pm and 3pm for people to collect their food parcels. They did some goody bags at Christmas, and they are going to try and do it again in the summer so parents of children at school who are eligible for free school meals can request one. Volunteers are always welcome. The number of donations remain static so, in reality, they are declining.

**Friends of the Yellow Land and BING (Bishops Itchington Nature Group):**

Thanks to Pam Reason and the team who do really good work in maintaining the Yellow Land and the orchard. They meet every week and are always looking for new members to join the group

**Community Centre:** There has been a change in management. They now have a new enquiry email [enquiriesBICC@gmail.com](mailto:enquiriesBICC@gmail.com). and there is a dedicated person responding to the enquiries.

**5. Reports from County & District Councillors:**

**Warwickshire County Council (WCC):**

As County Councillor, Cllr Chris Kettle represents 11 villages in the Feldon Division that covers 53 miles and has over 9,000 adult residents.

WCC spends, this year, a budget of £420 million. The vast majority of this is spent on Adult Social Care, £250 million is forecast to be spent this year alone. This equates to £500 per adult in the district being spent on Adult Social Care. The Children and Families budget is £115 million and is the junior version of Adult Social Care and includes fostering, support for children but does not include any expenditure towards Special Educational Needs. Therefore £365 million out of £420 million is not spent on the services that most of the resident's use. The balance must cover Fire and Rescue Services, Highways, Environment, Waste Planning, Waste Disposal, Economic Planning, Health and other aspects of health care which are not part of Adult Social Care.

The biggest area of complaints he receives apart from individual concerns where he supports individual families, is about potholes, road signs, road markings and flooding. He has a delegated budget to spend over the whole of Feldon District. He has spent a lot of it in Bishop's Itchington this year re-tarmac the pavement between the school and Ladbroke Road (approximately £20,000).

The funds available for the road network across the district are limited. WCC has set up a new pothole team for rural areas and unclassified road as they were conscious that most pothole complaints are on 'A' roads, urban areas where there is a much heavier level of traffic which meant rural areas were missing out. The team's target is that any dangerous pothole is dealt with. If possible, on the same day with all potholes where there is a risk of some form being repaired within 30 days. Often the repairs are temporary on the basis we need to sort the problem out then come back later to do a permanent repair.

Special Educational Needs (SEND). He has been approached several times over the last two years with families who need support, particularly with education and this is where children have fallen out of the education system and there has been a blockage in the information flow between those schools and WCC. Children get left at home without being educated excluded from their first school and with nowhere to go. SEND is a hugely emotive area and all the SEND expenditure by law, must be funded by the government. WCC is not allowed to charge the

council taxpayer for the money we spend on supporting SEND children. Last year WCC was given a budget in the region of £60 million to support SEND children in education. That was completely in the wrong sphere in terms of volume. We also have a legal obligation to support those people, and we overspent the budget in 2024/25 by £48 million. There is a strange quirk in that, normally if you overspend you must take it out of reserves, if you have no reserves, you must charge council tax. Because WCC are not allowed to spend any money on SEND we spend the money the government gives us but not any of our own. The overspend is kept in a special account and the government (current and previous) have said that one day they will come up with a plan to sort out the over expenditure. The cumulative overspend by the end of 2025/26 will be approximately £150 million which is a massive amount of money. WCC are not prepared to support our SEND children, we have a legal obligation to do so, but it is a major matter of concern as to not only how we will meet that shortfall, the government has committed that they are going to give a solution but that does mean money. WCC is not the only county in the country with the problem, every county has it. If we sort the £150 million out, we still must work out going forward how SEND expenditure is funded.

He gets a grant of £8,000 that he has spent across villages to support community schemes. There will be another grant this year to support village communities and a bidding process that takes place in July and if any money remains, there is a second bidding process in November. Usually, grants are in the region of £1,000. They are not there to fund a whole project but are a contribution to allow projects to get off the ground.

HS2 – he has the longest stretch of HS2 of any councillor in England. He and the Stratford District Councillors have struggled endlessly with proposed HS2 road closures and today have received a proposal to close the A423 because they want to widen the track from one side to the other. It takes hours of their time and have had countless meetings over the last 8 years. It is endless – the only thing they have learn is ragwort, a poisonous plant that will kill animals who eat it. It only grows on uncultivated/unmanaged ground and HS2 have hundreds of acres of ragwort which makes adjacent fields unusable. Two years ago, HS2 had no team and no recognition that they have a legal responsibility to remove ragwort. Each contractor now has a team and has said how they are going to treat ragwort this year.

### **Stratford District Council (SDC):**

Cllrs Nigel Rock and Natalie Gist were introduced to the meeting. Cllr Rock advised that their report had been circulated therefore would not go over it.

It is good to notice the anniversaries of the football club and WI. SDC are celebrating their 50<sup>th</sup> anniversary by being abolished by the proposed merger of the district and the county councils - it is called English Devolution.

The Local Plan for SDC and WDC has been out for consultation and over six and a half thousand responses have been received so the councils are working their way through these as there is a very tight timescale to deliver the local plan.

There is a great deal of concern for local residents here as there are a lot of new settlements proposed around this area.

Foodbanks – SDC has supported the foodbanks, and it should look at how this help can be increased.

Council Tax bills have been delivered and include lots of information particularly information on recycling. The recycling plant is based in Coventry and is owned by a consortium of local/district councils. Recommend that people download the app as it tells you about the right days for bins, what can be recycled and can also be used to report fly tipping.

He concluded by saying it had been a pleasure dealing with Karen and wished her the best of luck in Northumberland.

## **6. Questions and Answers:**

- The question was asked as to what the timescales were regarding the local plan. Cllr Rock advised that by the end of December, a broad brush of the settlements has got to be dealt with but there is also a lot of other issues that need resolving as well i.e. where you put renewable sites, heritage assets, travellers' sites etc. It then goes to a government inspector to look at and they can ask numerous questions. All the steps taken/to be taken will be publicly announced.
- BISA: One of the trustees highlighted on the pavilion, everyone in the village agrees to wanting a new pavilion but in order to secure some funding, they do need feedback from village residents and there is a quick (takes two minutes) survey on Facebook and on leaflets around the village. The main issue the working group has is due to recent history many residents are concerned about the money aspect. The working group want it to be fully funded by the schemes that are going on around us i.e. HS2. There are several funds they can apply to which previously they did not have access to but they cannot present a business plan to the village and say this is what you have asked for and this is our vision until we get enough people to say we would like a pavilion. We cannot access funding until we have a certain percentage of people saying this is something we want. People in the surrounding areas are welcome to complete the survey
- Old Coop Building, Chapel Street – are there any more specific plans for the building? There has been nothing since the planning application to seek a change of use from retail to apartments

## **6. Close of Meeting:**

Cllr N Thomas thanked residents for attending the meeting. The meeting closed at 20:50

## 4. Matters Arising from the Minutes

To discuss and record any Matters arising from the minutes of the parish council meeting of 28 April 2025.

## 5. Report from the Chairman of Bishop's Itchington Parish Council

As another Parish Council year draws to a close, it has been an eventful year not least with having three separate Clerks supporting the Parish Council.

Karen Stevens who joined us in 2020 left in May to move north to Newcastle with her partner. We wish her well in her new life in the north.

We were very lucky to receive interim support from Emma Hooker, the Clerk in Priors Marston, for three months. Given the difference in size and responsibilities between the two villages, Emma picked up the baton with enthusiasm and supported the Parish Council whilst we looked to recruit a permanent successor. I would like to record our thanks to Emma for her invaluable support at short notice on top of her existing responsibilities to Priors Marston.

So, in early August, we were delighted to welcome Jill Green, who lives in the village, to join us as our new Clerk. Whilst new to the role, Jill has extensive experience in local government, and this quickly showed through as she picked up the full portfolio of responsibilities without blinking. We look forward to working with Jill with the many challenges the PC will face over the coming few years.

Apart from the run of the mill tasks of keeping the village estate tidy and mown, one-off projects this have included painting the guttering on the cemetery chapel, and supporting the resurrected village cricket club by helping to replace the existing artificial wicket. The club started last year but owing to the lack of a pitch in the village had to play all their matches "away".

Although not yet in place the wicket should be installed in the early part of the summer enabling cricket to return to the village after many years absence.

The Parish Council took over the two village greens from Orbit Housing in Old Road and Central Drive and to prevent vehicles being parked on the grass, and damaging the surface, has installed fencing posts around both greens.

As the Parish Council is responsible for many of the trees around the village, we have reviewed the past tree survey and will be updating it and carrying out necessary maintenance work on those trees identified as potentially being a risk.

**Christopher Kettle – Chairman**

## 6. Reports from Portfolio Holders of Bishop's Itchington Parish Council

### 6.1 Biodiversity – Cllr Matthew Burns

In the year 2025/26 for the biodiversity portfolio the following has been actioned.



The replanting of the buffer area Mandale drive has been completed in 2026. Prior to the replanting the area was overgrown and had been deemed to be unfit and in a poor condition. As a result, the area was cleared and a new hedgerow has been planted containing a multitude of different hedgerow plant species which will increase the biodiversity within this area. Also, within the scope of these works, is planned maintenance to ensure that the area remains a healthy habitat and that biodiversity of the area is protected.

We are still working to action the findings of the tree survey completed in 2024, a result of which is that we have several trees to be considered at risk, one which has already been felled. We will continue to look into the remedial actions that are required with regards to the survey results, how to deal with any loss of trees that may come about

from it and what should be done to rectify any loss in biodiversity should the tree be removed.

We have supported a request for water course testing by Pam Reason, with a view to test for run off of phosphates and nitrites within the river Itch. The data obtained will allow us to see the overall health of the river and where we can impact change to build up the river's health.

### 6.2 Community Centre – Cllr Norman Thomas

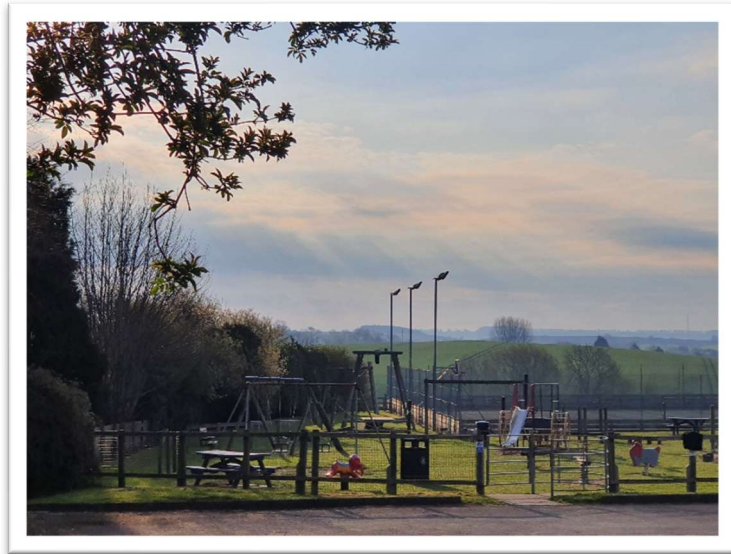
I have been attending Community Centre meetings, and it looks as if there is now an established committee who are keen to organise the centre in a more professional manner. The possibility of establishing the centre as a charity is being investigated.

Also on a positive note, Orbit have installed (at their cost) some new toilet windows and safety exit doors in the main hall. Orbit had also previously advised that they would like to use the centre as a "field office" for outlying villages, but there has been no further movement on this matter.

A long-standing volunteer who was acting as handyman and gardener has moved away so it was agreed by the parish council that our newly appointed general maintenance person would take over the grass cutting at the back of the building.

## 6.3 Playground/Playing Field – Cllr Norman Thomas

The playground was subject to its annual safety inspection at the end of November. Nothing of significance was identified, however, and as the equipment is now approaching 3 years old, it was recommended to carry out some routine maintenance/inspection on those pieces with wearing parts. This is being arranged with the suppliers, Kompan, and we are awaiting a date for this exercise.



At the “councillors corner” gathering on 21st March 2026, a member of the public raised an issue concerning the poor state of the path running through the playground, and agreed, it is in a poor state – this will be raised in the next PC meeting for discussion on effecting a repair.

On the subject of vandalism, following a visit by the local rural crime adviser team, it was suggested that CCTV and playground lighting may be beneficial. A battery/solar CCTV was tested, and a unit has subsequently been purchased. Regarding lighting, several quotes were obtained for various arrangements of lighting in the playground. However, the cost is considerable and during a parish council meeting, it was agreed that the high cost did not compare with the relatively low level of vandalism and any subsequent reparation costs, thus it was decided not to follow up with lighting.

Following complaints of youths trespassing from the playground through the dilapidated fence and into the neighbour's garden, it was agreed to renew the fencing along the northern boundary of the playground - a new steel fence has now been erected along the complete length of this boundary.

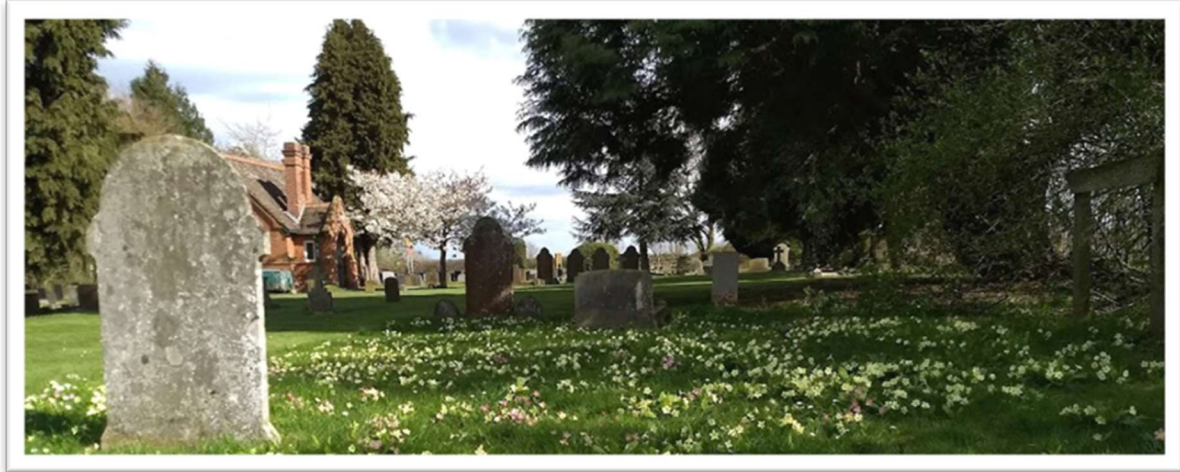
Regarding the playing field, the neighbouring farmer has raised complaints of balls being hit into his field and distressing his sheep, also the lack of security along his lane and children running through the hedge and into the track in front of moving vehicles is a cause for concern. Both issues are being followed up with the farmer.

Regarding the pavilion, a contract was awarded to remove the asbestos from the roof area - this work has been completed by a specialist company. There are also some tiny quantities of asbestos in some of the electrical switch gear - it was included in the contract that the contractor will come back and do this as and when the pavilion is demolished to make way for a new building.

A memorial bench has been installed next to the playground alongside to the existing bench in remembrance of Cllr Judith Christian-Carter, and an additional village

noticeboard was erected at the entrance to the playing field, paid for with a grant from SDC.

## 6.4 Churchyard, Cemetery & Allotments – Cllr Alistair Lamont



Over the past year, a number of matters relating to the churchyard, cemetery and allotments have been discussed at Parish Council meetings, reflecting both ongoing management and areas where improvements have been made.

In the cemetery, routine matters such as maintenance, grass cutting and minor damage have been addressed, along with some more specific issues raised during the year. This included reports of theft of items such as vases, and some concerns around railings and general upkeep, all of which have been followed up through the Council.

A significant piece of work has been the review and adoption of updated Rules & Regulations for Burials, alongside a Memorial Safety Policy. These were developed, reviewed and formally adopted during the year, helping to ensure clear processes are in place going forward.

Memorial safety has also been a key focus. A full inspection was carried out in January 2026, with a small number of memorials identified as high risk and made safe. Work is ongoing to contact families where needed, and a further inspection has already been planned for next year to maintain safety standards.

Other works in the cemetery have included progressing chapel-related maintenance, reviewing fees (which remain unchanged at this time), and carrying out planting to strengthen sections of the boundary where hedging was thin. Volunteers are also being sought at key times to help open the chapel for the benefit of the community.

For the allotments, continued use and popularity reflect that they continue to be a valued village asset. During the year, there have been discussions around how the site is managed, including working with the landowner and developing a clearer governance structure. Draft proposals have been prepared and are being refined, with further updates expected as this work progresses.

Across all areas, the focus has been on maintaining standards, addressing issues as they arise, and putting in place clearer structures to support the long-term future of these important community spaces.

I personally thank all those involved especially Val, Jill and the many hidden volunteers for their ongoing support to the community and hard work ensuring these spaces are safe and peaceful for all.

## **6.5 Finance – Cllr Christopher Kettle**

Although the accounts for the year are not yet available at the time of going to press, the Parish Council expenditure was within last year's budget, and after a full review of all expenditure items, took the decision not to raise the Parish Council's Precept, being part of the Council tax bill, this year and rely on financial reserves brought forward from previous years.

The money raised by the Parish Council is all spent on maintaining and improving the facilities owned by the Parish Council in the village for the benefit of residents.

## **6.6 Planning – Cllr Adam Dugmore**

Save for one large application on Gaydon Road, planning activity within the parish this year has been a broad mix of householder applications, tree works and changes of use to commercial properties, such as the former Co-Op building. As an adjoining parish, we have also responded to applications for warehouse units around junction 12 which have the potential to draw more traffic through the village.

At the end of March, despite our objections regarding the highways and parking issues, the application for 6 houses at the junction of Ladbroke Road and Works Lane was approved by Stratford's planning committee. Frustrating as this is and disappointing that minimum standards aren't better, the planning committee had few options and this outcome was expected.

But this is just the beginning of something much bigger...

There has recently been a dramatic shift in planning which could affect every community in Stratford-on-Avon district and around two-thirds of all planning authorities.

Stratford-on-Avon District Council was in good position with a substantial housing land supply (over 25 years' worth). In July, this was recalculated to be 5.06 years then, during the Bordon Hill appeal, the Planning Inspector again recalculated the housing land supply. This time the district council's previous over-supply vs the Core Strategy was disregarded, resulting in a housing land supply of around 2.5 years. As of the end of March 2026 this figure has fallen further to 2.21 years.

Despite the over delivery of housing permissions across the district, we now face a "tilted balance". When a housing land supply falls below five years, the council's planning policies are considered 'out of date' and a 'presumption in favour of sustainable development' applies.

**This is exactly what it sounds like – a development is expected to get approval unless the harm is clear and significant or it is deemed to be unsustainable.**

On top of this, the approvals that made up the previously substantial housing land supply haven't vanished. We have all those PLUS whatever is approved in the near future.

Unsurprisingly, this shift has prompted developers to pile in with large planning applications. We are aware of live and potential applications for 664 houses in or immediately adjacent to the parish.

Gaydon Road	84 homes
Bishop's Hill north*	230 homes
Hambridge Road	150 homes
Plough Lane/Station Road	200 homes

*\* the Bishop's Hill north site is technically within the Harbury parish however its location and relationship to the existing Bishop's Hill mean its effects will mostly be felt by Bishop's Itchington.*

As always, we will respond to these objectively and in the interest of the community as a whole. We're happy to hear from you on planning matters but please keep in mind that we have to keep an open mind on an application before it is discussed at a council meeting.

## 6.7 HR – Cllr Orlaith Horsman

This role is now shared by Cllr Jane Thomas and Cllr Orlaith Horsman. Our previous Clerk Karen Stevens left in May 2025 and we were joined by new Parish Council Clerk Jill Green in August 2025.

Jill has taken to her role with aplomb and although having no prior parish council clerking experience, has met every new task with enthusiasm, commitment and diligence. Jill is an exceptional member of the team. Jill is fast becoming a well-known figure in the community and is a great source of support and information for local residents.

Jill is supporting necessary changes and improvements within the local community and has been supporting the opening of the Cemetery Chapel since the sad loss of Wendy Buckley. Jill has managed to recruit new volunteers who will be able to ensure this access continues for families.

Within the last year there have been several further new appointments. The Parish Council agreed there was a need for a general maintenance person, employed by the Parish Council who can support smaller local maintenance jobs being completed in a competent and timely manner when needed. We therefore welcomed Tony Green following interviews and he has been a great asset, having already completed many jobs that had been outstanding for some time and taking on regular jobs around the community and in community buildings.

Jools Kirton left his position as Playground Inspector; we wish him all the very best and thank him for all the years of service he gave to this role. We interviewed and welcomed Ed Frape to this position. Ed has lots of experience in safety management and a positive interest in supporting the community. Ed is also very involved with Bishop's Itchington Cricket team. The funding has been raised for a new cricket pitch in Bishops Itchington

and so matches will be able to be played at home, welcoming other village teams to the playing fields this Summer.

Val Powell continues to be Cemetery Manager and offers much needed continuity and support to local families who visit loved ones at the Cemetery, as well as ensuring the Cemetery is a welcoming, well-maintained and a safe space for all who visit. We thank Val for all her hard work and efforts which are very much appreciated by us all.

## **6.8 Police liaison – Cllr Orlaith Horsman**

There has been ongoing liaison between the Parish Council and the local Safer Neighbourhood Team (SNT). Including local Police Surgeries supporting residents to have direct access to officers to share concerns and/or gain advice. The last took place on the 13th of February 2026 at the Village Store and a further is planned for May although the date is yet to be confirmed.

Happily, the team have seen recruitments take place and there is now a team of three officers based in Southam. PC Hanna Rankin has been joined by two new community support officers for the Southam beat. They are PCSO Cowley 6007 and PCSO Withers 6013.

Cllr Natalie Gist (District Councillor) recently met with PC Hannah Rankin and reported the following; “Largely reports of Anti-Social Behaviour (ASB) locally appear to have reduced although there have been reports from residents of ASB at the Blue Pool on Bishop’s Hill and PC Rankin has requested that this be added as a location hotspot for Operation Minwear from May time. These are high visibility foot patrols by officers and PCSOs consistently, using officers from across the District. In the meantime, the team will allocate some time to do their own patrols, considering any parking offences and ASB.”

There is positive communication in place between the Local SNT team and Jacky Sykes where local matters affecting School Pupils and their families are considered and discussed and where needed support is implemented.

The Parish Council together with District Councillor (Natalie Gist) have also established a new initiative to support accessibility for the community to Local Parish, District and County Councillors called ‘Councillors Corner.’

This takes place quarterly at The Village Store. The first took place on the 23rd March 2026 from 10am-12pm and the next is planned for the 20th June 2026 between 10am and 12pm. This an opportunity for local residents to pop in, share views or ask questions about local matters. The pressing issues apparent at the first session were local planning applications, environmental pollution and dog fouling.

As the Summer approaches should an increase in ASB be identified residents are encouraged to follow the guidance below which has been sent to us by the local SNT team.

## **Community Safety Message: Reporting Anti-Social Behaviour**

Dear Residents,

We all want our neighbourhood to be a safe and welcoming place, and reporting anti-social behaviour (ASB) plays a crucial role in achieving that. While social media platforms like Facebook can be useful for sharing concerns, they are not an official reporting tool. To

ensure issues are properly addressed, it's important to report them through the correct channels.

### **How to Report Anti-Social Behaviour:**

#### **✓ To the Police:**

- Call 101 for non-emergency ASB (e.g., vandalism, persistent noise, public disturbances).
- Call 999 in an emergency (if a crime is in progress or there is an immediate danger).
- Report online via Warwickshire Police - Report | Warwickshire Police

#### **Local Authorities:**

The Council and the Police work in partnership and share relevant information when a coordinated response is needed.

Content of your report:

- Date
- Time
- Location
- Descriptions/Details of offenders if known
- Vehicle details, make, model, colour, registration (If seen)

#### **What NOT to Include in Your Report**

When reporting ASB, it's important to provide clear, factual, and relevant information. Avoid:

- ✗ Vague descriptions – Be specific about what happened, where, and when. Instead of saying, "Someone was acting suspicious," describe their actions.
- ✗ Unverified accusations – Only report what you have witnessed or have evidence of. Speculation can lead to false reports.
- ✗ Personal disputes – If an issue is a private disagreement rather than ASB, consider mediation services or speaking to your local council.
- ✗ Social media posts as a substitute for reporting – Posting on Facebook may raise awareness, but it does not officially log the issue for investigation.
- ✗ Incidents that "might" happen – Only report actual occurrences not what you think could happen. Example: Instead of saying "A group of teenagers might cause trouble later" report, "At 8:00pm, a group of teenagers were throwing bottles in the park and shouting at passersby."

#### **Why Official Reporting Matters:**

We've noticed that some residents post incidents on Facebook or inform their Parish Councillors but don't report them to the authorities. While discussing concerns is valuable, without an official report, the police and council cannot take action.

Reporting ensures:

- ✓ The issue is logged and investigated properly.
- ✓ The authorities can identify patterns and take preventative action.
- ✓ Resources are allocated effectively to tackle ASB in our area.

We encourage everyone to use the correct reporting channels while also supporting each other as a community. If you witness or experience anti-social behaviour, please report it directly to the appropriate authorities.

Thank you for helping keep the community safe.

**Southam Safer Neighbourhood Team**

## **6.9 Bishop's Itchington Primary School Liaison – Cllr Orlaith Horsman**

The Parish Council were asked by Jacky Sykes, Headteacher of Bishops Itchington Primary school to have a Parish Councillor attend their Governors meetings. The aim being to assist local information sharing, about community matters and raise awareness for both the School and the Parish Council as a consequence.

This has been working well. Cllr Horsman has taken on the role and now attends the Governors meetings both to share and gather information pertaining to community matters. The School is doing well and is proactive in seeking feedback on performance from pupils, parents, staff and the overall Stowe Academy.

The Parent Teachers Association (PTA) also known as Friends of Bishops Itchington Primary School (FOBIPS) are continuing to fund raise so that the children have the ability to engage in an even wider variety of extracurricular and onsite activities. Fundraising this year is focused on funding the creation of a running path bordering the school field for the children.

Any awareness of grant funding streams locally has been shared with the School and PTA and acted on to support this initiative.

The School have been inviting outside presenters in to widen the Children's knowledge about future careers and prospects across the board and this has been well received by the Children. The school has also been working on sustainable energy options and hopes to be able to put in solar panels in the not-too-distant future.

One of the ongoing matters being discussed is the influx of planning applications which could amount to over 800 new houses, some directly in and others on the borders of the village. Should any or all be agreed by planning this will have significant ramifications, given the school has waiting lists for some year groups and a total of only 2 places currently available across the whole school for this year's intake.

The next Governors' meeting is planned for May 2026 and a further Annual Summer Fayre is planned, and hopefully the community will all attend to support this fundraising event.

## 7. Reports from Village Organisations

### 7.1 Crafty Cuppa

Crafty Cuppa started 25 years ago, initially set up to raise funds for a village defibrillator. However, upon achieving this goal it was decided to continue this community group, to help raise funds for the Air Ambulance which delivers rapid emergency care to communities across Warwickshire, Northamptonshire, Derbyshire, Leicestershire and Rutland — 24 hours a day, every day of the year.

Crafty Cuppa sessions are held on the last Friday of the month (except December) in the Memorial Hall between 10.00am and 11.45am. On average 35 people attend this community chat and social gathering, where all are welcome to enjoy a coffee/tea and biscuits. Attendees include all age groups with new faces being welcomed regularly.

Funds are raised by the selling of drinks and a tabletop sale, where the table sales typically include craft items, with a charge of £5.00 per table. With each drink purchased a free raffle ticket is received, adding to the fun! In addition, there are a further two raffles, firstly for a hamper and secondly for four various prizes that have been donated.

Funds raised this year are **£2,500** which will be donated to the Air Ambulance on 27 March 2026.

Thanks go to the supporting members of the community, and all new attendees are very welcome.

**Richard Cox – Treasurer**

### 7.2 Bishop's Itchington Senior Residents Association

Bishop's Itchington Senior Residents Association are a non-profit making group who raise funds towards events and trips for the Senior Residents of the Parish.

Bingo Nights and Coffee Mornings are held in the Greaves Club, Bishop's Itchington.

Bingo Nights are held on the third Wednesday of the month starting at 7:30pm, and Coffee Mornings on the third Thursday of the month starting at 10:00am, except for the following date changes:

- June Bingo - is on Wednesday 10<sup>th</sup> June 2026

- June Coffee Morning – is on Thursday 18<sup>th</sup> June 2026
- October Coffee Morning – is on Thursday 15<sup>th</sup> October 2026
- October Bingo – is on Wednesday 21<sup>st</sup> October 2026

Bingo Nights and Coffee Mornings are available for everyone to attend and include a raffle. Refreshments are provided at Coffee Mornings. The sessions are well attended by between 30-50 residents.

Proceeds raised from refreshments and raffles at Bingo Nights and Coffee Mornings go towards Senior Resident Association funds.

Bishop's Itchington Senior Residents Association Committee Members

**Ann Murphy, Pam Gulliver (Treasurer), Sue Wheeler, Pat Ruddock, Richard Cox**

### 7.3 Bishop's Itchington Football Club (BIFC)



We have only fielded one team this year in the Leamington Sunday League, managed by Johnny Adair. They have had a mixed season but will play in the Andy Campbell Cup Final, one of the Charity competitions run by the League.

Running a football club is not cheap. We are lucky enough to be sponsored by the Greaves Club. This sponsorship helps with paying for insurance, first aid and fees. We were also lucky enough to be sponsored by local building business MKM, who bought us a new kit.

We play down on the playing field and use the pavilion facilities (such as they are!). These are courtesy of the Parish Council, to whom we are very grateful.

We celebrated 100 years of BIFC at the end of last season. It was a great night with lots of faces from the past and current players. Here's to the next 100 years!

**Pam Reason**

### 7.4 Bishop's Itchington Sports Association (BISA)

Bishop's Itchington Sports Association has been in existence for about 25 years and tries to identify the need for sports and leisure facilities in the village and raises funds to provide them.

Although the courts on the playing field (originally built by BISA) are now the responsibility of the Parish Council, BISA still run the day-to-day management of them. They are free to all villagers unless anyone or a group wished to block book the courts or use the floodlights. They are currently used regularly by a tennis group, five a side footie

group, walking netball, the cricket group and occasionally netball and boys' soccer teams for training.

The badminton group uses the Memorial Hall on Wednesday evenings and Tuesday mornings. Many thanks to Linda who co-ordinates the club and Rob, Mary and Wendy who are currently running the sessions.

This year we have continued to support the school with a variety of sporting equipment so that they can offer a wide range of activities to the students. The cricket team have continued to expand their activities – for two seasons now they have played friendlies against other village teams, using Ratley cricket pitch for their home games. They have enjoyed playing and occasionally winning! Hopefully they will have their own artificial wicket to play on this coming summer. We were able to fund £2000 towards this and the Parish Council also donated £5000 which added to their own efforts will enable them to go ahead with this exciting new project.

We are a very small group and are always looking for new members. If anyone is interested in sport/leisure and would like to join us, please don't hesitate to contact us. We meet about once a month in the pub or the Greaves Club. Our email address is [talktobisa@hotmail.com](mailto:talktobisa@hotmail.com) so that people can contact us about anything to do with sport and leisure – ideas for new activities, funding for village activities or queries about the courts.

**Pam Reason**

## 7.5 Friends of Bishop's Itchington Primary School



Following the change in committee FoBIPS had another successful year and Liz Scott chose to retain her position as chair of the committee. A couple of members stood down, and we welcomed some more new members, we're very pleased to have you all on board and hope that you enjoy your time on the committee.

Towards the end of the last school year the new committee had a very busy couple of weeks holding their Father's Day Gift Room, selling refreshments on Sports Day, a Summer Disco, ice cream sales and their first summer fair raising in excess of £4000, an amazing achievement thanks to the Committee, our parent volunteers and school community.

Unfortunately, the weather was not on our side for our annual welcome BBQ, some string winds and torrential rain meant that unfortunately it had to be cancelled at short notice, we hope to bring it back again next year.

October brought our AGM where there were some small changes within the committee, but all named roles remaining the same. Immediately following the AGM attentions quickly turned to the Christmas Disco where the children had a great time and raised in excess of £700 and our second Friday Christmas Fair. Once again, we had an excellent turnout despite the wintery showers with lots of festive fun and games, and a visit from

the big man himself in our Grotto and a guest appearance from some Guide Dogs. Thanks to our school family's generosity we raised in excess of £2000. For the first time this year we held a Christmas Gift Shop in school, Elfridges, this gave the children a chance to choose some gifts for their special people raising over £600.

During March, the children have had the opportunity to buy some gifts for their Wonderful Women in our gift room celebrating Mother's Day, taking just shy of £700. We also held our Easter Disco and an Easter Bake Sale where we raised over £800.

As we head into the summer term following a well-earned break, attentions are turned towards a shake-up of our summer Fair, Father's Day and Sports Day, along with some eagerly anticipated ice cream sales.

The FOBIPS team are extremely grateful to all our contributors and supporters that are helping us raise money for a racing track around the school grounds which will provide excellent health and well-being opportunities for the pupils at the school.

**Elizabeth Scott - Chair of Friends of Bishops Itchington Primary School.**

**fobips@gmail.com**

## **7.6 Bishop's Itchington WI**

Now 101 years old with 48 members, BIWI is still thriving!

We've had some excellent guest speakers all educational or entertaining, some were a bit of both, the Barber Surgeon with his blood splattered apron springs to mind!



We hosted a "Watch Party" in the Church and invited other local WIs to join us in watching the National Federation of Women's Institutes Annual Meeting, which was held on Zoom this year.

Our interest groups including Craft and Gardening are well attended with the Garden Group now planting up and caring for 14 Village flower boxes. Our Drama Group will start planning our Christmas Entertainment any day soon...

A Craft subgroup created a banner for International Women's Day, with cross stitched statistics depicting the injustices that women still suffer today. It was hung on the railings at the Memorial Hall during March and created quite a lot of discussion.

We meet in The Memorial Hall at 7.30pm on the first Wednesday of the month and welcome women of all ages to join us.

**Jane Thomas - Secretary**

## **7.7 St Michael's Church**

The church is thriving and the church family continues to grow, 50 – 60 people attend the weekly service on Sundays and around 40 people login into the midweek and Sunday online reflections.

On the first Sunday of the month, we hold an all-ages family service and every other Sunday we offer activities for both primary school age and secondary school age children. There is also a playroom for pre-school children. At the other end of the age range, we hold a monthly senior citizens service followed by refreshments.



Members of the church organise a men's breakfast held at the Galanos hub and host a monthly women's breakfast in the church meeting room. Both take place on the third Saturday of the month and on average both are attended by 15 people each month. The church also hosts occasional 'lunch with friends' three times a year in the village community hub where we provide a Sunday lunch for those in the village who would normally eat on their own. We generally have 18-20 guests. These events are open to all and are attended by members of the congregation and non-church goers who share in food and fellowship.

We secured a grant from the Church of England church building council funded by The National Lottery Heritage Fund, the Pilgrim Trust and The Radcliffe Trust to repair the East (St Michael) stained glass window. For some years, a piece of the window with part of the quote from Revelation, about Michael fighting the devil has been missing, this has now been replaced.

The church continues to run a Food Bank. Demand for food parcels has increased so much that we have increased the number of food parcels/boxes that we keep in stock from 6 to 8 as we kept running out of food each week. The extra boxes mean we have more capacity to help people. In 2025 we gave out 257 food parcels to help families in Bishop's Itchington, Harbury, Northend, Upper Lighthorne and Fenny Compton. We helped 13 families over the summer holidays with goody bags containing outdoor toys, craft kits and food for a picnic and at Christmas we helped 16 families with Christmas goody bags with Christmas treats, food and Christmas crackers.

At Harvest Festival we had an overwhelmingly generous number of donations to the foodbank from both St Michael's and St Nicholas Church, Radford Semele. Bishop's Itchington Primary school also collected and donated food for the foodbank and just before Christmas we received a large donation of food from the Bishop's Itchington Scouts, Cubs and Beavers which was very welcome. Thank you to all who donated. We also received a donation of £260 from Knightcote village who raised the money by carol singing around their village, thank you very much. The number of requests for food parcels is still following an upward trend, so donations like these make a huge difference.

The Food Bank is run out of the Church Meeting room, and the room is also used by non-church groups. Unfortunately, there is a serious structural issue with the stone walls of the meeting room, and the gables are now in danger of collapsing. Because this is due to faults in the original construction rather than accidental damage, our insurance will not cover the cost of the repairs, the total cost of which is £93,000. Work to carry out the repairs will start in late April. Thanks to the generosity of the congregation and local supporters, we have already raised £60,000 but we face the challenge of raising the remaining £33,000 this coming year – any donations would be gratefully received.

**David Pink**

## **7.8 Friends of the Yellow Land & Bishop's Itchington Nature Group (BING)**



This group meets up every other Sunday morning for a couple of hours to manage two community green spaces in the village – the Yellow Land and the mini orchard in the corner of the playing field.

The Yellow Land is situated a short way down Works Lane (off Ladbroke Road) and forms the entrance to the Wildlife Trust Nature Reserve. It is an area of limestone grassland and wildflowers, which supports a colony of small blue butterflies – a rarity in Warwickshire. The group works to maintain the area and prevent too much scrub regeneration, which would block out the sunlight required to allow the flowers and grasses to grow, supporting the butterflies and lots of other insects and bugs and so on up the food chain. There is a surfaced, circular path for people to walk around and enjoy the area.

The orchard is situated in the far corner of the village playing field. There are apple trees, pear trees, damsons in the far hedge, and blackberries growing wild. We have also planted a couple of hazels, which we hope will in time produce some nuts to go with the fruit. The fruit trees should be about to burst into blossom and then hopefully bear fruit in the autumn for people to enjoy. Our small friendly group meets every other Sunday morning at 10.30am and finishes around 12.30pm. Tools and instruction (if needed) are provided. Contact Pam on 07392 858894 for more information or to find out where the next meeting will be.

**Pam Reason**

## 7.9 Bishop's Itchington Footpath Group

The inaugural meeting of the footpath group was held in January this year in the church meeting room with a follow up meeting in March. At present there are 14 members and new members are always welcome.

The aim of the group is to make the public footpaths and bridleways around the village known to and accessible to residents. We are supported in this by the Parish Council and Warwickshire County Council.

So far we have walked most of the public footpaths and identified various issues. Our first task will be to replace any broken way marker arrows so that the routes are clearly marked.

In the future we hope to put together a series of walks from the village which people can use to explore the surrounding countryside.

If anyone is interested in joining the group please contact the coordinator Barbara Pink ([pinkbabara116@gmail.com](mailto:pinkbabara116@gmail.com))

**Barbara Pink**

## 7.10 Men's Shed

A Men's Shed is a community workspace, like a typical "mans shed in the garden", but bigger, better equipped, and with far more people.

They are places for skill sharing and informal learning, of individual pursuits and social interaction. No two Sheds are the same. The activities follow the interests and skills of the members. Men's Shed mainly attracts older men, but we also have women and younger people amongst our number.

Bishop's Itchington Men's Shed is situated at Brookside Eco Farm on the Gaydon Road. Some of you may remember it as "The Mushroom Farm", and indeed our Shed is an old mushroom growing building.

Since our formation, in 2017, we have installed multiple work benches, each with overhead lighting and multiple power points. There is a wide range of hand and power tools available. We also have a separate "dusty" area with lathes, sanders, saws, router, and a planer/thicknesser, all fitted with dust extractors.

Members mostly carry out work on their own projects; many are wood based. However, we also take on community projects, and so far this year we have completed three planters for the Memorial Hall, a bench seat for the churchyard and a wheelie bin shelter for the Community Centre is in progress. We also have a beekeeping group, with up to ten hives locally. Each year members receive free honey, and the surplus is sold off to cover working costs

We meet between 7:00pm and 9:00pm each Wednesday and Friday evening and our meetings *always* have a tea/coffee break at 8:00pm. This is an important part of the meeting. We currently have 23 members, and our membership costs just £30 per annum.

**Alan Faulkner**

## 7.11 Memorial Hall

### A Pillar of the Village Community Celebrating 105 Years of Service and Looking Ahead.

#### Introduction

Memorial Hall has been at the very heart of our village for 105 years, bringing us together for all sorts of gatherings, celebrations, and community occasions. It's a place that holds so many memories and continues to be a place where new friendships are formed and old bonds grow stronger.

#### Community Activities and Events

This year has been particularly active for the Hall, with a full calendar of events reflecting its continued importance to local life. We host regular groups including martial arts, bowls, badminton, line dancing, Women's Institute, Parent and Toddlers, Beavers and Cubs.

The Hall is also a venue for ad hoc bookings providing a venue for everything from social clubs and charity fundraisers to family celebrations and public meetings. Its versatility ensures accessibility for all members of the community, regardless of age or background.

#### Social Events and Fundraising

The Hall hosts social events including regular bingo evenings, lively quiz nights, and popular film screenings, all of which promote community cohesion and help alleviate social isolation among residents—both young and old. Importantly, they are all fundraising activities that allow us to maintain the hall.

#### Current Projects and Challenges

Renewing the Hall's floor is a primary goal, ensuring its safety and functionality. This is a significant project. We are currently awaiting the outcome of a funding application to fund this project. If this fails, we may need to Crowd Fund! The floor needs to be replaced.

We are still striving to attain charitable status. This has turned out to be hugely complex due to historic applications that have confused the process.

#### Community Support and Collaboration

We acknowledge and thank the Parish Council for their ongoing support, and our regular users' groups and attendees at our events all which has been invaluable in our efforts.

There is a need to ensure both established villagers and those from new developments are welcomed and involved in activities and decisions. To strengthen our shared future, all village organisations' need to work together, recognizing that every group has something



to contribute and can provide mutual support. By fostering collaboration and inclusivity, we can help the Hall remain a vibrant centre for all.

### **Looking Forward**

As we mark 105 years of Memorial Hall, it is fitting to reflect on its legacy and renew our commitment to sustaining it for future generations.

### **Carolyn Went**

## **7.12 Hidden Green Community Growing Space - Old Road**

Over the last 14 years, there has been a growing space behind the communal garages on Old Road which are behind the green.

Only a few residents (from Old Road and other local areas), have taken an interest over the year. It was developed by volunteers at JLR and the raised beds have good quality topsoil from Ryton Organic gardens.

I arrived in the village 12 years ago and currently, there is myself and my elderly father who takes care of it, along with a new resident from Bishop's Bowl who is now getting involved. Due to ill health, there are 2 of us who can no longer invest time and energy in the land as much as we would like.

Therefore, I am inviting other local residents to come down and take a look. As you enter, there is plenty of weeded and manured land on the left by the fence ready to be used. The land is clay but perfect for growing potatoes, squashes, courgettes, marrows, beans and other hardy plants.

There are also fruit trees, fruit bushes and herbs which you are welcome to pick from in the summer. The grass is maintained by the parish council.

If you are interested, please contact the Parish Clerk for my contact details and I will happily show you around.

This is such a special place for nature, and it would be great to have more people looking after it.

### **Linda Hassall**

## 8. County & District Councillors' Reports and Questions

### 8.1 Councillor Christopher Kettle – Warwickshire County Council Councillor's annual report for 2025/26 for the Feldon Division



Whilst there has been some headlines about the change in political control at the County Council following the May 25 elections, the everyday task carried out by Councillors and County Officers has continued unchanged.

The County Council provides a wide range of services, from those that effect most residents, some on a day-to-day basis, to other services, particularly supporting those in need, which do not hit the headlines, until something goes wrong, but absorb significant resources in both staff time and finance.

The overall annual budget for the Council, agreed on 17<sup>th</sup> February 26, was for expenditure of £702m for the year 2026/27.

The biggest area of expenditure is in adult social care, budgeted at £274m, followed by care for children and families at £132m, together being £406m or 58% of the overall annual budget. Much of social care support is mandated in law and is demand led, with the Council having little opportunity to reduce demand.

Cost management is therefore limited to better and more efficient service delivery. However, the challenge is exacerbated by the very individual nature of the support needed.

The third largest area of expenditure is school transport. Along with some subsidised bus services, the overall cost of transport services is £70.4m.

Expenditure on those areas affecting the majority of residents, such as the Fire and Rescue service - £27.8m, Public Health - £28.8m, Highways - £17.8m and Waste management - £22.1m, total £96.5m.

Whilst every resident has their own idea of expenditure priorities, balancing the budget is extremely challenging trying to meet the competing demands the Council faces, not least given the continuing and growing demand, for those statutory services, the Council provides.

#### **Cllrs Discretionary budget**

One of the ways of alleviating some of the challenges, for small parish led improvements, is through the use of my Highways Discretionary budget.

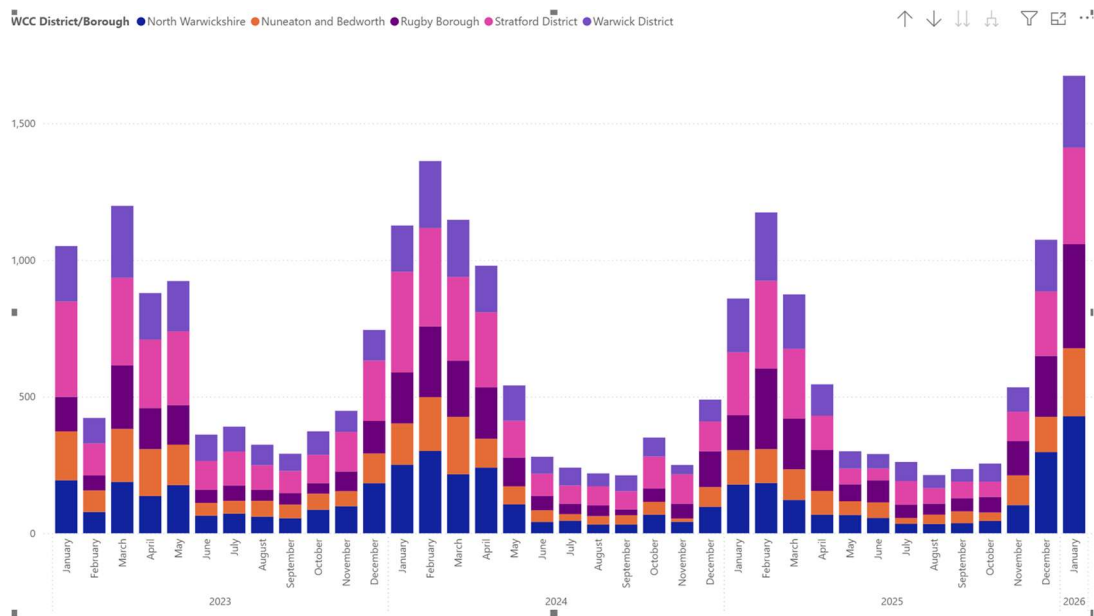
Over the past twelve months works have either been completed or submitted to officers for approval in Bishop's Itchington, Farnborough, Fenny Compton, Harbury, Long Itchington and Priors Marston. Schemes currently waiting to be started include the widening of the existing footpath alongside Station Road, Fenny Compton and addressing flooding opposite the Church in Long Itchington.

I have also submitted bids from the HS2 Highways Safety Fund for a number of different sites across the Division. The decision on the allocation of the remaining monies in this fund have yet to be made.

An area of concern for many residents has been the number of potholes on the road network, particularly over the past four months.

The combination of the continual and heavy rain interspersed with short periods of freezing conditions (the snow ploughs were mounted for the first time in seven years), has caused severe damage to the road network.

The number of potholes reported in Jan 26 has been the highest of any month over the past three years, see below. Whilst some of these public reports are duplicates of the same defects, the increase in the number of potholes on the highway network is real. In response to this, WCC has increased its gang resource to 15 gangs in the north of the county and 14 gangs in the south, on site, with 2 tonnes of tarmac per day, working weekends and extra hours.



Other than highway and footpath repairs, one of the other key areas that has been addressed is highways affected by surface water flooding.

Significant improvements were made to drainage in Fenny Compton, where a key culvert crossing Station Road was found to be blocked resulting in flooding across the road. In Long Itchington, the flood risk team undertook an investigation of flooding off the Marton Road, where they found that a major culvert had been blocked by a developer installing a post for a new boundary fence. After many months, the developer accepted responsibility and dug up and removed the post repairing the culvert. This led to an immediate improvement.

Over the summer, I identified that the gully cleaning program had, for operational reasons, been changed, impacting mostly rural villages, from a significant proportion of gullies being cleaned once every two years, to once every three years. As a result, as part of the annual budget negotiations for 26/27, I put forward an amendment to the budget, that was accepted, to provide an extra £180,000 to reinstate the previous two-yearly program across the County.

One of the repeated concerns from residents has been road closures by utility companies. Clearly when a water main bursts, it needs to be repaired as soon as possible, not least to prevent the risk of flooding to neighbouring properties. However, the delays, after the initial problem has been resolved, cause frustration to residents and passing motorists. I have challenged Severn Trent a number of times to improve the speed of reinstatement and reduce lengthy, and sometimes inappropriate, diversions for drivers.

HS2 and its constructions have become a major part of the lives of those residents living in affected villages, which, in the Feldon Division, includes most villages, from Long Itchington in the North, to Wormleighton, Priors Hardwick and Priors Marston. I meet with managers of both BBV, for north of Southam, and EKFB, south to the County boundary, on a regular basis to raise concerns of residents and seek to mitigate the impact of the works on residents' daily lives. Our MP, Sir Jeremy Wright is kept fully briefed on those concerns and, working with Councillors, regularly contacts construction companies as well.

Clearly the track has to be completed, and there will be disruption, but meeting with the new Chief Executive of HS2, Mark Wild, in December, and subsequently one of his deputies, he is now aware of the impact on communities and has indicated a wish to try to reduce that impact where possible. I have also met with the HS2 Construction Commissioner and raised the same concerns.

Helping residents with their personal cases is confidential and so I will not share individual cases but they include SEND support, access to schools, and school places, transport to schools and access to social care.

In addition, I chair the Warwickshire Local Government Pension Scheme Investment Committee, and from that role, I was elected in September to chair the Joint Committee of the 18 LGPS pension schemes that are part of the Border to Coast Pooling Partnership, the fund manager for those schemes. Border to Coast now manage the investment funds of approximately 2 million LGPS members, across those 18 authorities.

It has been a busy year supporting eleven parishes and I endeavour and will continue to attend as many Parish Council meetings every month as possible working with Parish and District Councillors.

**Christopher Kettle**

## 8.2 District Councillor Natalie Gist



An annual Report from your District Councillor is in the form of a diary for the Council Year.

Throughout the year, Nigel and I have tried to keep residents informed by regularly attending and reporting to Bishop's Itchington Parish Council. We have also kept in touch with residents direct, answering their queries and helping them to resolve issues. Since Nigel's retirement in March, I have continued to support residents throughout Bishop's Itchington and particularly enjoyed meeting residents

at Councillor's Corner in March. Bishop's Itchington is a lovely community, and I am proud to represent you. Please feel free to contact me with any concerns and I shall always do my best to assist.

### **Annual Report from your District Councillor – 2025/2026**

Another busy year throughout the Ward and the District. I have included some highlights, which I hope will be of interest to you. Further detail and information about all may be found on the District Council's (now refreshed!) website: [www.stratford.gov.uk](http://www.stratford.gov.uk)

### **April 2025**

#### **Community Climate and Nature Fund**

As a member of Cabinet, I was pleased to approve more funding for round three of the Community Climate and Nature Fund (CCNF). £150,000 was allocated from the Climate Change Reserve to the CCNF, previously known as the Community Climate Change Fund (CCCF), for the next round of funding, which opened the following month. The funding was available to parish councils, properly constituted community, charity and sports groups across the whole of the District and opened in May 2025, with a further round for 2026 which is open for applications on a rolling basis. Further information and how to apply is here: [Community Climate and Nature Fund | Stratford-on-Avon District Council](#)

### **May 2025**

#### **VE Day Celebrations**

Thursday 8 May 2025 marked eighty years since the end of World War II in Europe. There were events to both celebrate and commemorate all of our loved ones across the District.

#### **Health screening events begin**

Stratford-on-Avon District Council joined together with the Graham Fulford Charitable Trust (GFCT) to offer a series of health screening events for both men and women across the District. The events enabled men and women to have a number of health

tests from a simple blood test, allowing them to, where necessary, seek further advice or action via their GP. This extremely valuable programme has been continued into 2026 and more information about this year's event is further down in this report.

## **June 2025**

### **Wilder Communities Project in collaboration with the Warwickshire Wildlife Trust**

£20,000 was secured for the delivery of the "Wilder Communities" project in collaboration with the Wildlife Trust. The scheme aims to plant trees, hedges and wildflowers in publicly accessible green spaces, enhancing biodiversity in areas which may not have previously had access to funding, and improving local health and wellbeing.

### **Third round of Trees for Farmers Scheme**

A further £35,000 was approved for delivery of the third round of the Free Trees for Farmers scheme.

## **July 2025**

### **Local government re-organisation**

On Monday 7 July, Stratford-on-Avon District Council's [Cabinet](#) discussed a report which could help define the future of Local Government in Warwickshire.

All of Warwickshire's District and Borough Councils along with Warwickshire County Council will be affected by the plans suggested in the [English Devolution White Paper](#), which is the Government's statement of its plans to devolve power from Westminster to local areas and reform local government. After considering residents' responses (from August as detailed below) and the reports available to them, at its meeting in November, the District Council ultimately preferred a North and South unitary option, with taxes paid by residents being spent locally.

A dedicated webpage for Local Government Reorganisation has been created, which includes a Frequently Asked Questions section and a timeline for Local Government Reorganisation in Warwickshire - [Local Government Reorganisation and Devolution | Stratford-on-Avon District Council](#)

### **Stratford on Avon District Council ranked second best for climate action in Warwickshire**

Stratford-on-Avon District Council was ranked second best for climate action in Warwickshire. Climate Emergency UK assessed all UK councils on the actions they have taken towards net zero. The 2025 Action Scorecard assessment consists of 93 questions or less, depending on council type, across 7 different sections, created in consultation with over 90 different organisations and individuals. In 2025 SDC scored 42% overall. This is a 12% improvement from the 2023 score and the District Council rose by 12 places in 2025, compared to 2023. This is 7% above the national average in 2025.

## **August 2025**

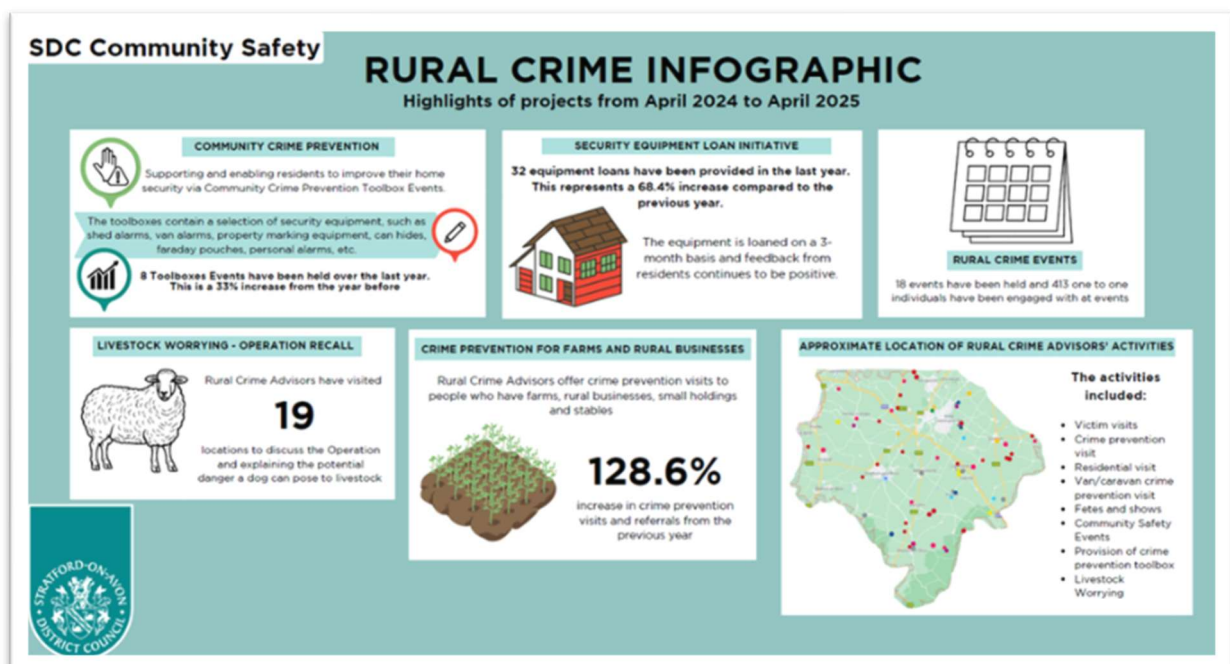
### **Public engagement regarding local government re-organisation**

Residents were invited to let us have their views regarding local government re-organisation proposals to help shape the future of local councils in the county in a public engagement exercise from Thursday 7 August 2025 to 14 September 2025. As discussed above, under Government proposals for local government reorganisation, all six councils in Warwickshire will disappear by 1 April 2028.

## September 2025

### Rural Crime Action Week

It was Rural Crime Action Week from 8th to 12th September and Stratford-on-Avon District Council took this opportunity to raise awareness of the work being done to tackle rural crime and the support available in South Warwickshire. The District Council's Rural Crime Advisors (RCA's) are proactive in providing advice and preventive services for those living in rural communities. Their aim is to engage with rural communities and provide bespoke advice and solutions to victims of crime. They have visited many parishes and events in the ward and are available to help with any queries. If you have a farm or rural business and have been a victim of crime or are concerned that you may become a victim of crime, the RCAs can visit your property and discuss any improvements that might be made to help enhance your security. More information about the Rural Crime Advisors and how to contact them is here: [Rural Crime | Stratford-on-Avon District Council](#)



### Tackling knife crime

Stratford-on-Avon District Council promoted an innovative virtual reality which was delivered across the District. In partnership with Warwickshire County Council, the initiative was offered to schools, colleges and youth organisations and was running since last year. In Stratford-on-Avon District, the project has been offered to all high schools and delivered by the Council's Community Safety officer in over 7 schools and colleges. The success of the project is evidenced through positive feedback from those involved.

## **October 2025**

### **Residents confirm preference for two unitary councils**

Between 7 August and 14 September 2025, over 2,300 people provided feedback which helped to inform how councils are structured and residents access services from April 2028, when the Government's requirement for Local Government Reorganisation (LGR) takes effect. 73% of residents expressed their preference for two unitary Councils compared with just 22% for one large Council covering all of Warwickshire.

### **Free Trees for Parish Councils**

The planting of trees and hedges is an important adaption measure as both provide cooling. Therefore, £50,000 has been allocated to fund the planting of trees for parish and town councils across Stratford-on-Avon District.

### **Community Safety Team nominated for national award for tackling anti-social behaviour**

The Resolve ASB Awards celebrate excellence and innovation in the field of community safety, recognising the efforts of teams and individuals who go above and beyond to reduce harm, support victims, and build stronger neighbourhoods. The Resolve Awards are the sector's most prestigious and coveted awards. As Cabinet member for Community Safety, I was very proud that our small but mighty Community Safety Team was nominated for this award.

## **November 2025**

### **Local government re-organisation**

Councils in Warwickshire formally submitted their proposal to Government for the creation of two new unitary councils for the county. The two-unitary proposal was supported by Nuneaton and Bedworth Borough Council, North Warwickshire Borough Council, Stratford-on-Avon District Council and Warwick District Council. The proposal had strong public support and was backed cross-party by five of Warwickshire's six Members of Parliament.

### **Funding approved for infrastructure projects**

The allocation of over £1.85 million in Strategic Community Infrastructure Levy (CIL) funding to support vital infrastructure projects across the District was approved. The decision follows a comprehensive review and assessment process introduced earlier in 2025 to ensure a more strategic and targeted approach to funding. The Cabinet approved the revised allocation process in March 2025, moving away from the previous open bidding system. This new methodology prioritises projects that align with the Council's Infrastructure Delivery Plan (IDP) and Core Strategy, and that address pressing infrastructure needs in areas that have experienced significant development. The Infrastructure List will be updated annually, with the next revision scheduled for March 2026.

## **December 2025**

### **Consultation launched on second homes council tax premium**

Stratford-on-Avon District Council started a six-week consultation on a proposal to introduce a Council Tax premium on second homes across the District. From April 2025, Councils in England had new powers to charge up to 100% additional Council Tax on second homes. These are properties that are substantially furnished but not anyone's main residence.

The District Council considered applying the maximum premium of 100%, which would mean second homes pay double the standard Council Tax rate. Currently, second homes in the District pay the full Council Tax without any discounts. The proposal aims to address housing availability and affordability in the District, where average house prices remain significantly higher than the regional average (£382,000 compared to £257,000 in the West Midlands). By increasing the cost of owning a second home, the District Council hopes to encourage more properties back into the local housing market.

## **January 2026**

### **Local Enforcement Plan Consultation**

Stratford-on-Avon District Council is targeting significant improvements in the delivery of its enforcement services backed by a new Local Enforcement Plan (LEP) and wanted residents' views. As a local planning authority Stratford-on-Avon District Council has the responsibility for taking enforcement action, whenever necessary. The Local Enforcement Plan is a document which is fundamental to our commitment to maintaining high performance and advancing cases involving the most serious breaches of planning control as a priority, thereby safeguarding our community's interests.

### **Housing Allocations Scheme Consultation**

Stratford-on-Avon District Council invited residents and stakeholders to have their say on proposed changes to its Housing Allocations scheme, which determines how social housing is allocated across the District. The District Council is introducing a new policy following the end of its partnership under the Home Choice Plus scheme. The proposed Stratford-on-Avon District Council Allocations Scheme aims to ensure that access to social housing is fair, transparent, and prioritises those in greatest need.

## **February 2026**

### **Council Tax**

Stratford-on-Avon District Councillors set the District element of the Council Tax at a meeting of the Council on Monday 23 February.

This means that all the services provided by the District Council cost £3.35 a week for a Band D household. This contributes to meeting the cost of providing a wide range of services including recycling and waste collection, planning, street cleaning, housing, housing benefits, leisure services and children's play areas.

The District Council only retains 7.0p of every £1 paid in Council Tax to provide its range of services. Stratford-on-Avon remains a low-taxing authority, 18th lowest out of 164 district councils across the country in 2024/25.

Anyone who thinks they could be struggling to pay their Council Tax is encouraged to contact the District Council as soon as possible by calling **01789 260990** or email **revenues@stratford-dc.gov.uk**, where the team will be able to advise what help is available.

## **Five-year housing land supply consultation**

Stratford-on-Avon District Council opened a public consultation on a draft Interim Policy Position Statement, as part of its approach to recovering a five-year housing land supply.

Being unable to demonstrate a five-year land supply has significant implications for the operation of planning policy. Under the National Planning Policy Framework (NPPF), key development plan policies relating to housing must be considered out of date, and the "presumption in favour of sustainable development" is applied in decision-making.

To address this, the District Council is implementing a comprehensive Housing Land Supply Action Plan, agreed by [Cabinet in October 2025](#), focused on boosting supply and recovering a five-year position as quickly as possible. At the time of writing, a report on the outcomes of the consultation, together with the finalised statement, is expected to be considered by Cabinet on 13 April 2026.

## **Stratford Business Conference**

Stratford-on-Avon District Council in partnership with Coventry and Warwickshire Growth Hub Group hosted the Stratford Business Conference this month to bring together business owners from across the Stratford District to share success stories, spark fresh ideas and build strong, long-lasting business networks.

## **Health Screening Events Launched**

For a second year, Stratford-on-Avon District Council has joined together with the Graham Fulford Charitable Trust (GFCT) to offer a series of health screening events for both men and women across the District as approved last year. The events enable men and women to have a number of health tests from a simple blood test, allowing them to, where necessary, seek further advice or action via their GP.

*The tests on offer cost £14 each, subsidised by the District Council and are:*

For men over 40 - PSA (Prostate Screening)

For men and women aged 18 and over - diabetes and cholesterol

*For residents in the ward, the events closest to us are taking place at:*

Saturday 18 April at Lighthorne Heath Village Hall, Valiant Close, CV33 9UF

Saturday 9 May at Graham Adams Centre, St James Road, Southam, CV47 0LY

Saturday 30 May at Wellesbourne Village Hall, School Road, CV35 9NH

The events run from 10am until 2pm at each of the locations and residents are able to book at a discounted rate of £14 for each test. Spaces are limited and need to be booked in advanced at: <https://sdc.mypsatests.org.uk>

## **March 2025**

**Stratford on Avon District Council Tops Recycling Table in England for 2024/2025**

Stratford on Avon District Council has achieved a recycling rate of 63.9%, placing it at the top of the latest annual local authority waste statistics released by Defra. Organic waste accounted for 64.0% of its total household recycling tonnage, the highest proportion of any authority in 2024/25. The figure comes amid an overall decline in recycling performance in England, hitting 43.8% in 2024/25, down 0.2 percentage points from 44.0% in 2023/24. More information is here: [England's top council recycling rate revealed for 2024/25 - letsrecycle.com](https://www.letsrecycle.com/news/englands-top-council-recycling-rate-revealed-for-2024-25). Well done everyone!

## **Second Home Council Tax Premiums**

Stratford-on-Avon District Council approved the introduction of council tax premiums for second homes across the District from 1 April 2027. This follows national changes enabling councils in England to apply an additional charge of up to 100% on second homes, defined as properties that are substantially furnished but not used as anyone's sole or main residence. Stratford-on-Avon District has over 850 second homes, representing more than 1% of the District's entire housing stock.

Raising the cost of owning a second home is intended to encourage some properties back into the housing market. Increasing the supply of homes for local residents remains a priority within the Council Plan, which commits to delivering "affordable, well built and maintained homes" and making decisions in the broader public interest. More information may be found here: [Stratford-on-Avon District Council approves Council Tax Premiums for second homes | Stratford-on-Avon District Council](#)

## **Operation Recall seeks to prevent livestock worrying**

Stratford-on-Avon District Council's Rural Crime Advisors are participating in 'Operation Recall', a national initiative to raise awareness of livestock worrying. The initiative is being led by Warwickshire Police and supported by partner agencies around the country, such as the National Farmers' Union (NFU), Country Land and Business Association (CLA), National Sheep Association and the RSPCA. At this time of year, pregnant ewes and lambs are particularly vulnerable, but all new born and young animals are at risk. Reports of livestock worrying sadly increase and this often includes deaths and injury due to attacks by dogs on all kinds of animals, especially sheep. Operation Recall is extremely important to our rural communities in Stratford-on-Avon District. Livestock worrying has a devastating impact on local farmers and can be easily curbed through appropriate control of animals. We all must take responsibility for protecting local livestock by keeping our dogs on a lead when livestock is present.

## **And finally, Nigel has retired.....**

Following Nigel's resignation there is now a by-election for the Bishops Itchington, Fenny Compton and Napton Ward of Stratford-on-Avon District Council on 7 May. Further information about the by-election will be published by Stratford on Avon District Council. On a personal note, if I just may say publicly how much I have valued Nigel's help, support and friendship over the past three and a bit years and how fortunate that we all have been as residents to have him represent us.



As always, thank you to all residents for their help, support and kindness over the past year – I represent all of you. Please feel free to contact me at any time if I may be of assistance.

Best wishes

**Councillor Natalie Gist**

natalie.gist@stratford-dc.gov.uk

07745 210095

## 9. Parish Council Attendance Record May 2025 - April 2026

The council held 11 parish council meetings during the year, including the annual meeting of the council. There are currently 8 councillors.

Name of Councillor	Number Attended	Percentage Attended
Cllr Christopher Kettle, Chairman	11/11	100%
Cllr Norman Thomas, Vice-chair	11/11	100%
Cllr Adam Dugmore	9/11	82%
Cllr Steve Tressler	9/11	82%
Cllr Jane Thomas	9/11	82%
Cllr Orlaith Horsman	10/11	91%
Cllr Matt Burns	8/9	89%
Cllr Alistair Lamont	9/11	82%

## 10. Question & Answer Session

## 11. Close of Meeting

**Bishop's Itchington | Parish Council**

### **CONTACT YOUR PARISH COUNCIL**

Jill Green, Clerk to the Council

Bishop's Itchington Parish Council

The Old Sorting Office

Chapel Street

Bishop's Itchington

Southam

CV47 2RB

Telephone 01926 613902 or 07450360453

Email [clerk@bishopsitchington-pc.gov.uk](mailto:clerk@bishopsitchington-pc.gov.uk)

[www.bishopsitchington-pc.gov.uk](http://www.bishopsitchington-pc.gov.uk)