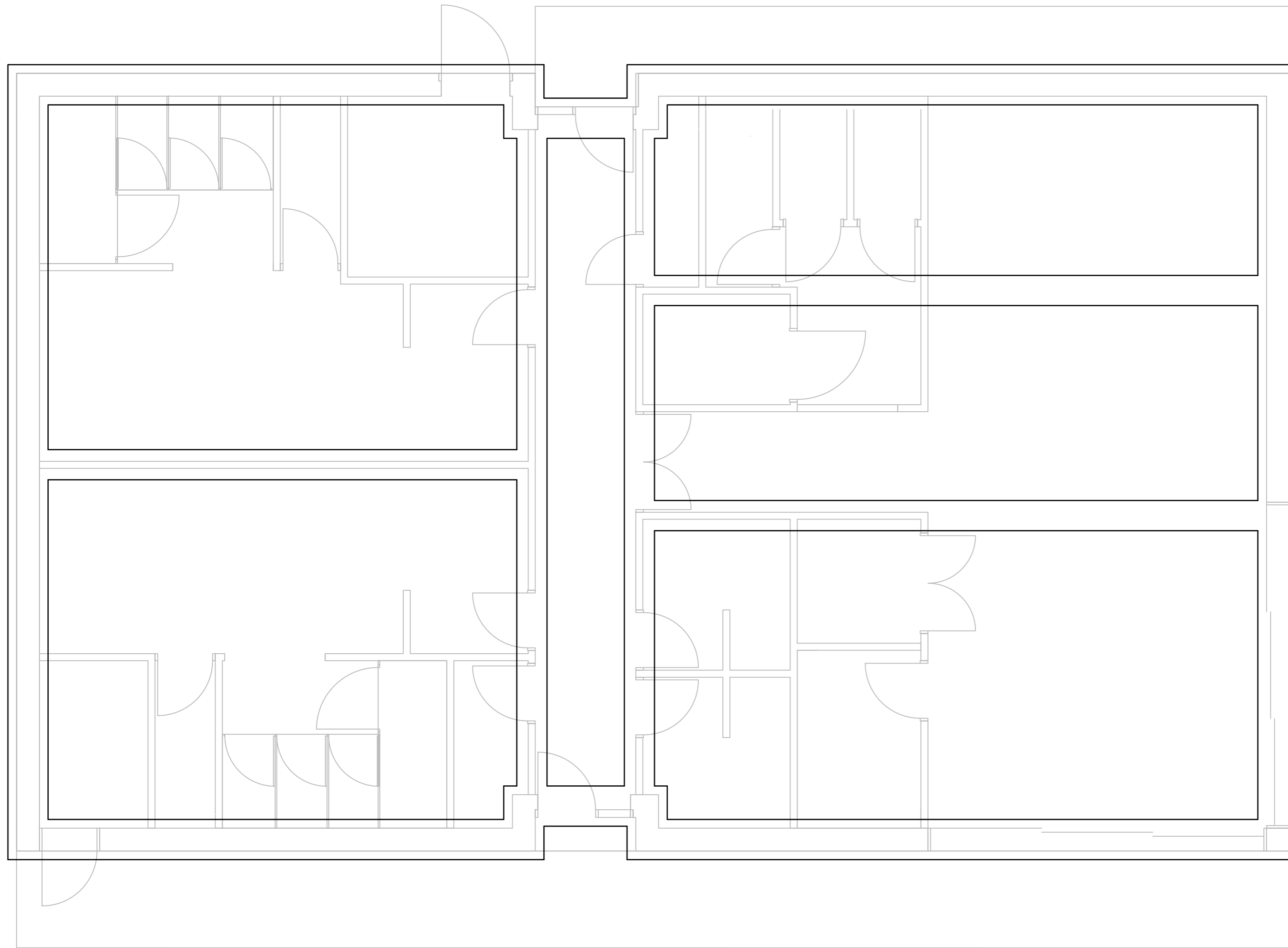


FOUNDATIONS -

Generally GEN1 trenchfill foundations, 600 w to external walls & 450 w to internal walls, additional widths to walls wider than 450 mm = 150 mm projection from face of wall.
 1.0 m o/all deep, subject to BCO approval and the requirements of NHBC Standards Ch.4.2 where there are trees within influencing distance or where influencing vegetation has been recently removed.
 Foundations may step up away from deepest to shallower with steps twice as long as they are high (ref ADA 2E2/diagram 22) & max step = 0.5 m.

GROUND SLAB -

Screed and insulation to Architects' details on
 100 mm thick, GEN1 oversite slab on
 1200 g polythene dpm (to lap with dpc) on
 150 min, sand blinded, well-graded, clean, inert hardcore capable of passing 150 mm sieve in all directions compacted in layers not exceeding 150 mm. Sand blinding to be just sufficient to fill all interstices and provide a smooth, level and closed surface.



FOUNDATION PLAN

Rev'n.	Description	Date
Richard Strauss Associates Consulting Structural Engineers 14 Seymour Road Stratford-upon-Avon CV37 9EP T: (01789) 298947		
CLIENT Bishops Itchington Parish Council		
PROJECT Proposed Sports Pavilion		
TITLE Foundations		
Drawn RS	Authorised RS	Scale 1/50
Status 1	Date APRIL'21	Project Number 9982
		Drg. no 02
		Rev 0
1=Prelim, 2=Info, 3=Appr, 4=Tender, 5=Const, 6=As Built		