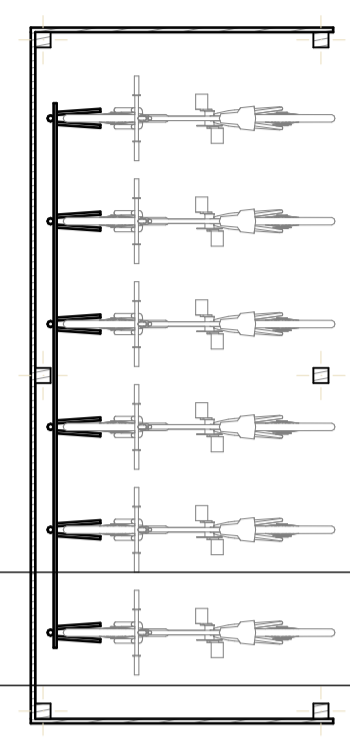
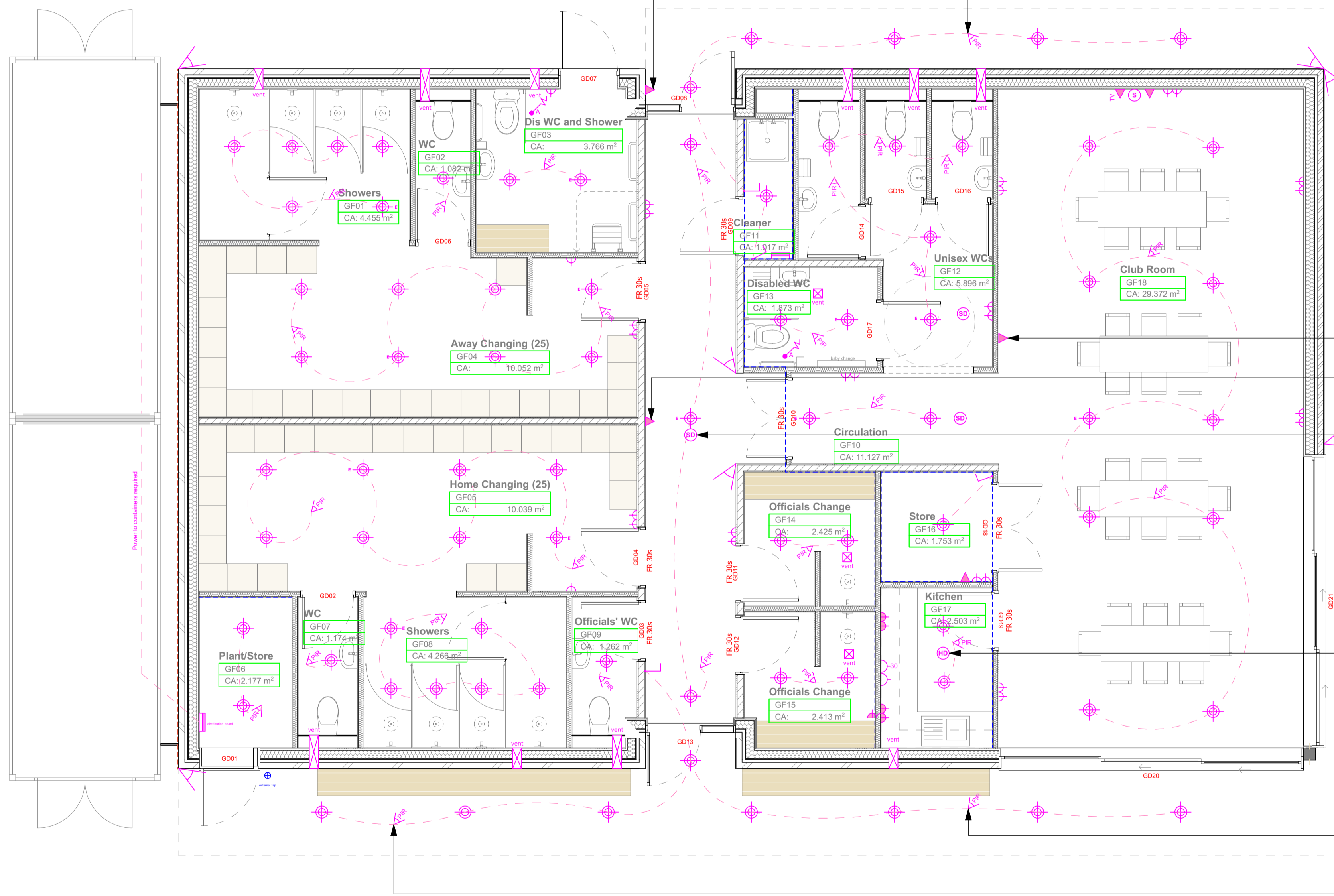


ELECTRICAL & LIGHTING KEY

- LED recessed downlight
- Pendant ceiling light
- Internal wall mounted light
- External wall mounted light
- Automatic tape light
- Tape light (located below wall units)
- Tape light located at plinth level
- Control panel for lights
- Light Switch (Pull Cord)
- Pull Cord Alarm
- Light switch
- 13amp double switched socket outlet
- 13amp double switched socket outlet over counter
- 13amp single switched socket outlet
- switched spur
- 30amp cooker socket outlet
- Samp single switched socket outlet
- Extract fan
- Shaver point
- Towel RAD
- Radiator
- Electric Vehicle Charging Point
- TV point
- DATA point
- Satellite point
- Telephone
- Smoke Detector
- Heat Detector
- Carbon Monoxide Detector
- CAT6
- Ceiling mounted PIR Sensor

Indicative position of electrical layout.
Lights switched as advised by Electrical Engineer.
Lights in bathrooms to be waterproof.



Data and power required for automatic opening entrance door.

PIR sensors in canopy roof to be on a timer and have day light sensors.

drop-down security bollards

Security Cameras positioned around and inside building as indicated.

High level DATA point dedicated to WiFi for Club Room.

High level DATA point dedicated to WiFi for Changing and Circulation.

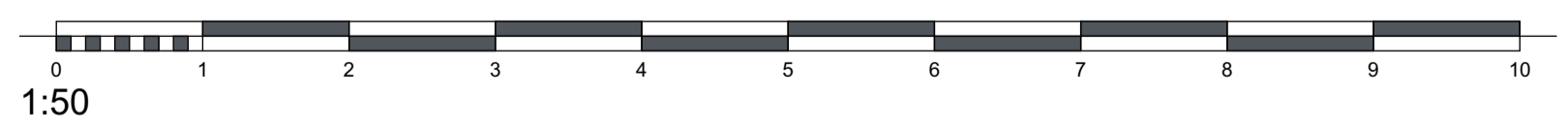
Smoke detector fixed on ceiling. New mains wired and interconnected smoke detector in the circulation space positioned on ceiling minimum 300 mm from adjacent walls and light fittings. Unit ceiling mounted above the level of doorways opening into the space and fixed in accordance with manufacturers restrictions.

Heat detector fixed on ceiling. New mains wired and interconnected smoke detector in the circulation space positioned on ceiling minimum 300 mm from adjacent walls and light fittings. Unit ceiling mounted above the level of doorways opening into the space and fixed in accordance with manufacturers restrictions.

PIR sensors in canopy roof to be on a timer and have day light sensors.

PIR sensors in canopy roof to be on a timer and have day light sensors.

Proposed Ground Floor Plan
1:50



Disclaimer:

This drawing is subject to copyright ©, and is the property of AT Architects Limited and must not be copied in whole or in part without their written permission. This drawing should be read in conjunction with all the appropriate consultants design drawings, together with any other AT Architects Limited drawings and the appropriate specification as issued. No liability will be accepted for any amendments made to this drawing by third parties.

This drawing must not be scaled. The contractor is to report all dimensional discrepancies, errors or omissions to AT Architects Limited prior to commencing construction work. The Contractor should also check and verify all building levels, site positioning, services, sewers, drains etc., prior to commencing any work, and notify AT Architects Limited of any discrepancies or inaccuracies accordingly.

Checked by: EW

Revisions:

Layout	Change Name	Issue Date
		23/04/2021
	Notes Amendments	27/05/2021

This drawing is for Building Regulation purposes only. This is not a Construction Issue drawing.

RevID	Issue Name	Issue Date	Issued By
01	WIP BR Issue	20/04/2021	MarkBranch
02	Building Regs 01	27/05/2021	MarkBranch

ArchCAD

Project:
Proposed Pavilion
Bishop's Itchington Sports Pavilion
Chapel Street
Bishop's Itchington

Client:
Bishop's Itchington Parish Council

Drawing Title:
Proposed Electrical Plan

Date:
27/05/2021

Purpose of Issue:
Building Control

Drawn by: MLB
Date: 1:50

Size: A1

Drawing No: 1485-0602-02



Building Control